



User Manual 用户手册

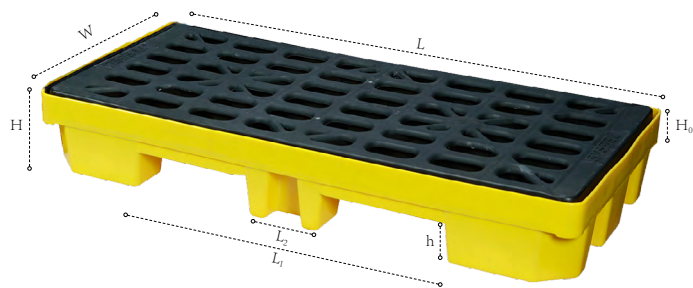
拼接式聚乙烯盛漏平台
Modular PE Spill Decks

非常感谢您购买 **SYSBEL** 拼接式聚乙烯盛漏平台。作为一家关注员工安全和环境保护的公司，**SYSBEL** 将以优良的品质保证您工作环境和人员的安全。

SYSBEL 生产的聚乙烯盛漏平台，采用高密度聚乙烯精密模具注塑成型，坚固可靠，由聚乙烯材料制造的托盘可预防绝大部分化学品渗漏，包括酸、碱等强腐蚀性物质。使平台更适于存储油桶、化学品桶等容器。
聚乙烯平台符合 EPA 及各国相关标准。将在正常使用中为环保助力，全面降低水体与土壤被污染的风险。
平台通过结构强化设计，具有承重能力强、安全能力强、及稳定性高等特点。托盘在结构上对格栅周边进行准确限位，使格栅更易于安装、拆卸和清洗。同时聚乙烯托盘格栅强度高、耐腐蚀，表面采用橡皮处理，有效增加表面摩擦力，可确保油桶放置的平稳。同时格栅能有效避免避免危险化学品在灌注、分装或存储时可能发生的意外飞溅。
托盘在纵边设置有可供 550mm 与 650mm 宽度的叉车叉槽，给客户作业提供便利。托盘在四周设置有叠加限位，可将多个托盘精准叠放并套运输，方便叉车转运，最大化的节省空间，节约运输成本。
托盘预留排漏孔开口位置，可根据各国当地法律进行开口设置排漏阀，方便客户的使用。



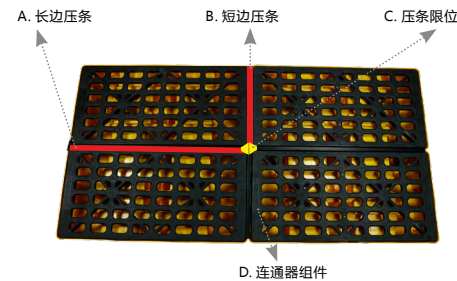
拼接式聚乙烯盛漏平台										
产品名称	盛漏量 (Gal/L)	类型	材质	颜色	承重量 (Kgs.)	外形尺寸 (长×宽×高/cm)	包装尺寸 (长×宽×高/cm)	标配	重量 (kg)	型号
聚乙烯盛漏平台	23/90	单品	聚乙烯	黄/黑	1500	128×64×20	128×64×20	格栅*1、平台*1	21	SPP101-2



H	H ₀	h	L	W	L ₁	L ₂
20	6.4	9.5	128	64	72.8	18.2

产品特点

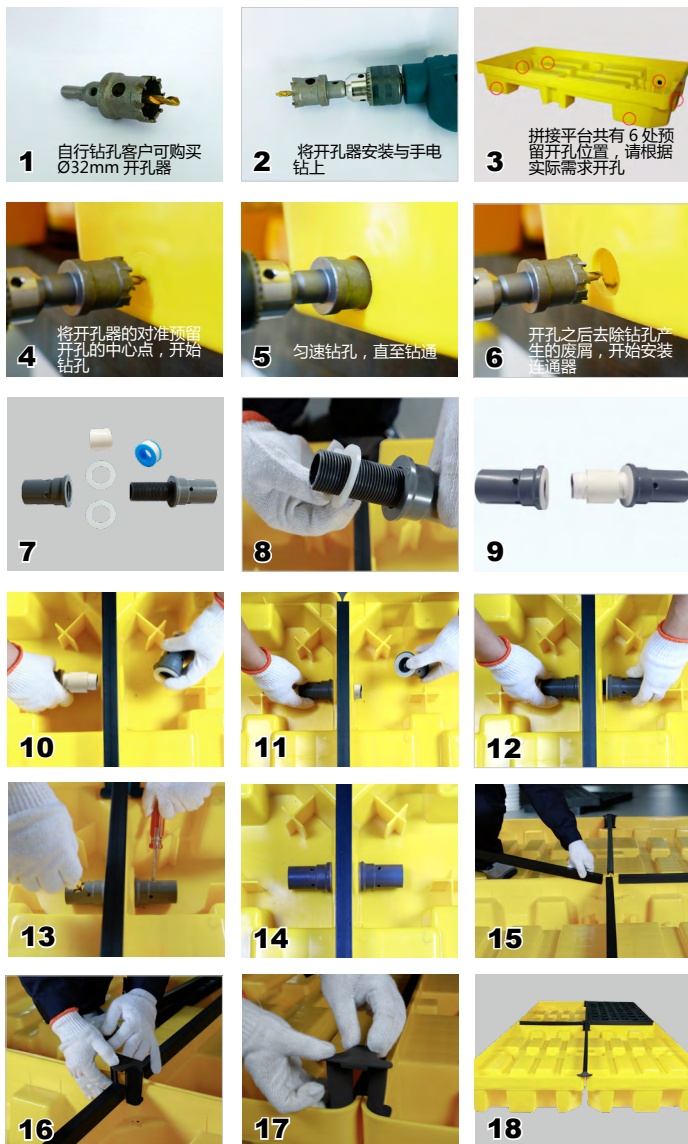
- 符合 EPA、SPCC、NPDES 标准和规范要求。
- 聚乙烯盛漏平台采用高密度聚乙烯注塑成型，坚固可靠，承重能力强、安全能力强、及稳定性高，满足各种存储容器的存放。
- 聚乙烯材质耐腐蚀，可用于存放油桶、化学品、电池等各种存储危化品容器，杜绝化学品泄漏时可能产生的危害。
- 无缝结构设计，消除渗漏，单品可承受 23 加仑液体泄漏；
- 产品拆装、清洗方便。
- 平台使用空间拓展能力强，可拼接，可连通。组成大型的盛漏中心，提升盛漏能力；
- 平台底部有叉车插口，易于搬运。



配件包名称	编号	零件名称	数量	型号
单排短边拼接配件包	B	短边压条	1	SPP014
	C	压条限位	2	
	D	连通器组件	1	
	E	连通孔1寸堵头	2	
		8#自封袋	2	
单排长边拼接配件包	B	短边压条	1	SPP015
	C	压条限位	2	
	D	连通器组件	2	
	E	连通孔1寸堵头	4	
		8#自封袋	2	
双排长边扩展配件包	A	长边压条	2	SPP016
	B	短边压条	1	
	C	压条限位	4	
	D	连通器组件	3	
	E	连通孔1寸堵头	6	
		8#自封袋	4	
双排短边扩展配件包	A	长边压条	1	SPP017
	B	短边压条	2	
	C	压条限位	4	
	D	连通器组件	3	
	E	连通孔1寸堵头	6	
		8#自封袋	4	
多排多列扩展配件包	A	长边压条	1	SPP018
	B	短边压条	1	
	C	压条限位	2	
	D	连通器组件	2	
	E	连通孔1寸堵头	4	
		8#自封袋	2	

安装与使用注意事项

- 安选择远离火源，通风良好、地面平整处进行安装。
- 搬运和使用过程禁止摔落、撞击。
- 根据存放容器大小，调节平台数量。
- 如需拼接或连通，请根据安装说明进行操作。
- 该产品主要设计为承载圆桶使用，其上放置的容器应避免局部应力的集中，否则可能会导致托盘隔板意外损坏。
- 托盘承重指托盘放置在水平平面上，货物平铺均匀摆放的最大重量。
- 仅用于存放化学品，不用于搬运和周转化学品容器。
- 当平台处于拼接或连通状态时，严禁进行转运、拖动或搬动托盘。
- 当已开通连通口不再需要拼接连通时，应对连通口进行封堵。



Thank you for using our products. As a company of caring employee safety and environmental protection, SYSBEL provides high quality products to ensure the safety of your working environment and personnel.

The PE spill decks produced by SYSBEL is HDPE injection molded with precision moulds and therefore robust and reliable. The PE decks can prevent leakage of most chemicals, including acids, alkalis and other highly corrosive substances, thus making it more suitable for storing oil drums, drums of chemicals and other containers.

The PE decks comply with relevant standards of EPA and each country. They contribute to environmental protection during normal use by comprehensively reducing the risk of water environment and soil pollution.

By adopting the reinforced structure design, the spill decks is featured with high load bearing capacity, high safety and high stability. The decks accurately restricts the gratings on the periphery, thereby facilitating easy installation, removal and cleaning of the gratings. Meanwhile, the gratings for PE decks are highly robust and corrosion resistant and have undergone surface roughening to effectively enhance surface friction, thus ensuring stable storage of drums. Moreover, holes in the gratings can effectively avoid possible accidental splash of dangerous chemicals during filling, subpackaging or storage.

The decks has fork pockets 550 mm and 650 mm wide lengthwise to facilitate operations by the customer. With stacking restrictions on four sides, multiple decks can be accurately stacked and packaged for transport, which not only facilitates transfer with forklift but also saves space and transport costs as far as possible.

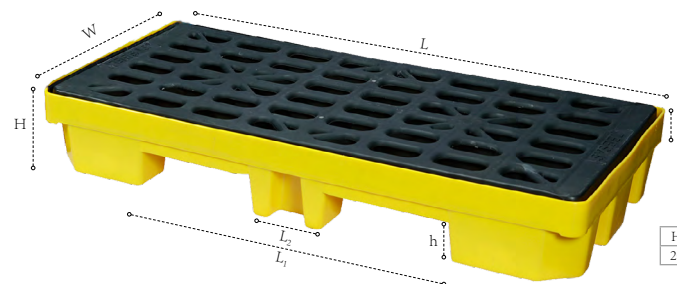
There is room reserved for drain hole on the pallet, where hole can be made and drain valve installed according to local laws, making it convenient for customers to use.



Acquired CE Certification, comply with the regulations of EPA 40 CFR 264.175 of EPA and SPCC as well as U.S. NPDES.



Modular PE Spill Decks								
Product	Capacity (Gal/L)	Material	Color	Load Bearing Capacity (kgs)	Overall Dimensions (LxWxH/cm)	Package Size (LxWxH/cm)	Configuration	Model
Modular PE Spill Decks	23/90	PE	Yellow/black	1500	128×64×20	128×64×20	Grating*1 Pallet*1	SPP101-2



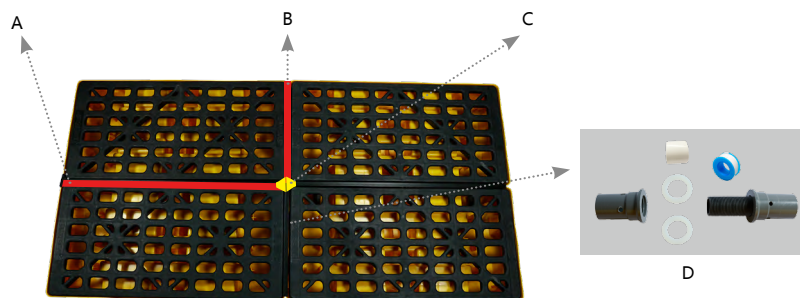
H	H ₀	h	L	W	L ₁	L ₂
20	6.4	9.5	128	64	72.8	18.2

© 商标和版权说明

SYSBEL®为SYSBEL注册商标, 受法律保护
根据版权法, 未经SYSBEL书面同意, 不得复制本手册的全部或部分內容; 我们已尽力确保本手册上的信息正确, 如內容更新, 恕不另行通知,
可随时查询我们官网 www.sysbel.com.cn

🔍 Description

1. Comply with requirements of EPA, SPCC and NPDES standards and regulations.
2. The HDPE injection molded PE spill decks, featured with high strength, reliability, load bearing capacity, safety and stability, is suitable for the storage of various containers.
3. Since PE is corrosion resistant, it can be used for storing oil drums and containers for storing chemicals, batteries and other hazardous substances and prevent possible chemical leakage incurred hazards.
4. Seamless structure design eliminates leakage and can accommodate full leakage of 70 GAL liquid.
5. It is easy to install, remove and clean.
6. There are fork pockets on the bottom to facilitate transport.

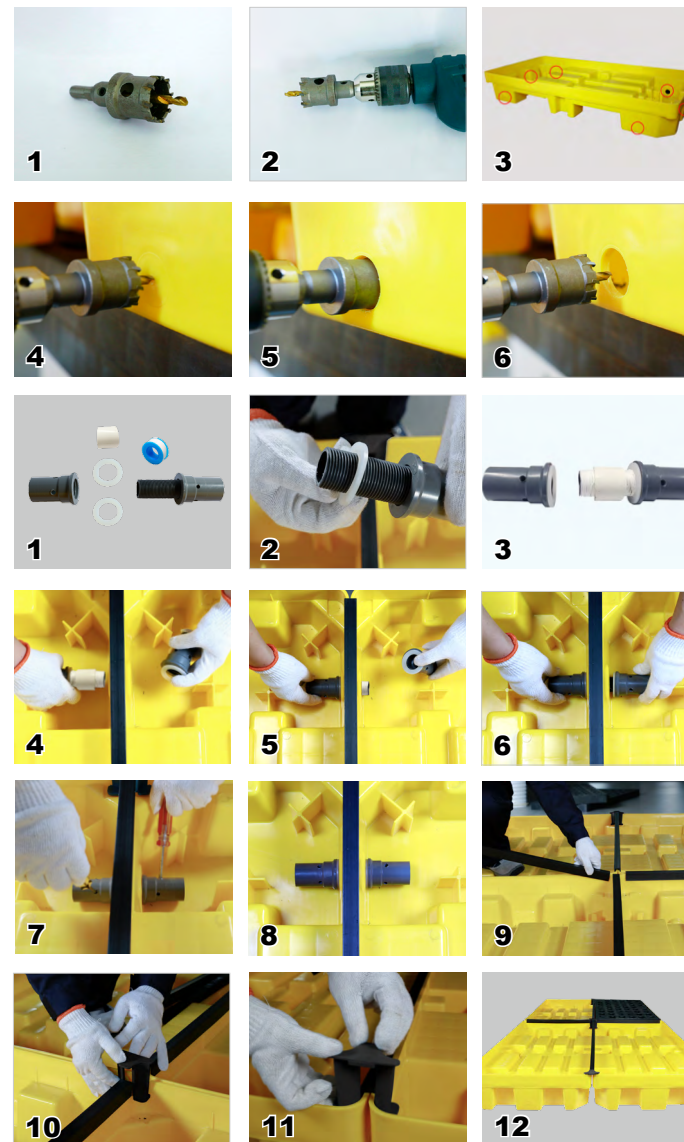


Accessories			
No.	Name	Function	SKU
A	Conside Connector	Fix Long Side, PP	SPP101-PJ01
B	Short Side Connector	Fix Short Side, PP	SPP101-PJ02
C	Connected	Connect Spill Decks for EPA	SPP101-PJ03
D	Corner Pin	Deine the Corner Positions, PP	SPP101-PJ04

* Chose by Decks Combination

🔧 Instructions for use of the combination lock

1. Install it where it is away from fire, well ventilated and smooth.
2. Implement employee protection.
3. No throw or bump during handling and use.
4. Adjust decks quantity according to size of the container(s) to be stored.
5. The product is mainly designed for carrying buckets and containers shall be so placed on it as to avoid concentration of local stress, or it may cause accidental damage of partition board of the decks
6. Load bearing capacity of the pallet refers to the maximum weight of goods evenly and horizontally laid on the decks with the pallet set on a horizontal plane.
7. It is intended for only storage of chemicals, but not for handling and turnover of chemical containers.



© Trademark & Copyright

SYSBEL® is a registered trademark of SYSBEL, which is protected by law. According to copyright law, it is forbidden to copy the whole or particle content of this manual without the written consent of SYSBEL. We have tried our best to ensure that the information in this manual is correct, and if the information is updated, we will not inform you. You can check our official website at www.sysbel.com.cn any time.